



AFINIA 3D™

Out-of-the-Box 3D Printing Experience for Educators, Designers, and Engineers



Easy to Use

Highly portable with automatic features



High Accuracy

Triangulation and structured light projection ensure high accuracy



High Speed

Up to 550,000 points per second. A single automatic or fixed scan takes less than 2 seconds



High Compatibility

Scans can be used for 3D printing or reverse engineering. STL, OBJ, ASC, & PLY format options



Multiple Scan Modes

Handheld, automatic and free scan modes



EinScan 2.0 Software

Powerful, intuitive software interface

EinScan-Pro Series

MULTI-FUNCTIONAL HANDHELD 3D SCANNERS

The EinScan-Pro family of multi-functional handheld 3D scanners rapidly capture and deliver watertight 3D data of real objects for 3D printing, or non-watertight data for reverse engineering applications. The scanners' lightweight, ergonomic design makes them portable and easy to use for all lengths of scans.

With four versatile scan options, the EinScan-Pro Series is equipped for portable and high-accuracy scans, perfect for educators, designers, and engineers who want to explore the capabilities of 3D design and printing.



Handheld Rapid Scan



Handheld HD Scan



Free Scan



Automatic Scan



SHINING 3D®
distributed by Afinia 3D

EINSCAN-PRO SERIES



MULTI-FUNCTIONAL HANDHELD 3D SCANNERS

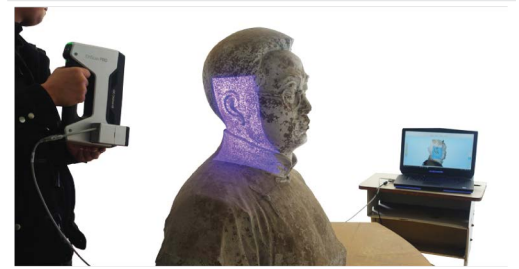


Technical Specifications: EinScan-Pro+

- ◆ 1.6x Larger scanning range
- ◆ 100 lines of HD scanning (vs 7 lines for non-plus version)
- ◆ Faster scan speed and object tracking



Scan Mode	HandHeld HD	HandHeld Rapid	Auto Scan	Free Scan
Accuracy	0.1mm	0.3mm	Single scan accuracy: 0.05mm	
Scan Speed	550,000 points/sec	450,000 points/sec	Single scan: <2sec	
Point Distance	0.2mm ~ 3mm	0.7mm ~ 3mm	0.24mm	
Recommended Object Size	100-4,000mm	150-4,000mm	50-150mm	50-4,000mm
Light Source	White light LED			
Align Mode	Markers	Feature, Markers	Markers, Feature, Turntable, Manual, Turntable Coded Targets	Markers, Feature, Manual Align
Texture Scan	No	Yes (with purchase of color pack)		
Special Scan Object	For transparent, reflective, and dark objects, please spray object with powder first before scanning.			
Outdoor Operation	No (Avoid direct sunlight)			
Printable Data Output	Yes			
Data Format	OBJ, STL, ASC, PLY			
Scan Head Weight	1.75 lbs (0.8kg)			
Sharing to Sketchfab	Yes			
Single Scan Range	300 x 170mm			



Technical Specifications: EinScan-Pro

Scan Mode	HandHeld HD	HandHeld Rapid	Auto Scan	Free Scan
Accuracy	0.1mm	0.3mm	Single scan accuracy: 0.05mm	
Scan Speed	90,000 points/sec	550,000 points/sec	Single scan: <2sec	
Point Distance	0.2mm ~ 2mm	0.5mm ~ 2mm	0.16mm	
Recommended Object Size	30-4,000mm	150-4,000mm	30-150mm	30-4,000mm
Light Source	White light LED			
Align Mode	Markers	Feature, Markers (optional*)	Markers, Feature, Turntable, Manual, Turntable Coded Targets	Markers, Feature, Manual Align
Texture Scan	No	Yes (with purchase of color pack)		
Special Scan Object	For transparent, reflective, and dark objects, please spray object with powder first before scanning.			
Outdoor Operation	No (Avoid direct sunlight)			
Printable Data Output	Yes			
Data Format	OBJ, STL, ASC, PLY			
Scan Head Weight	1.75 lbs (0.8kg)			
Sharing to Sketchfab	Yes			
Single Scan Range	210 x 150mm			



OPTIONAL INDUSTRIAL PACK
Tripod & Turntable



OPTIONAL COLOR PACK
Color/Texture Camera

System Support:

Windows 7, Windows 8, Windows 10, 64-bit.

Minimum Computer Requirements:

Processor: Intel I5 CPU or higher

RAM: 8GB

Free Hard Drive Space: 16GB

Graphics Card: GeForce GTX 660 or higher

Graphics Memory: 2GB minimum

Scans can be
3D Printed on

